

FIBRE OPTIC SYSTEMS FOR OHTL

Integrated solutions for transport and distribution overhead networks



CONNECT TO LEAD

As the worldwide leader in energy and telecom cable solutions, Prysmian believes in the effective, efficient and sustainable supply of energy and information as a primary driver in the development of communities. With this in mind, we provide major global organisations in multiple industries with best-in-class products and services, based on state-of-the-art technology.

- The challenge and opportunity before us require us to harness the power of human ingenuity to drive new forms of energy and information, to each and every corner of the earth.
- Pushing the boundaries of electrification and digitalisation, our cables are powering the circular economy, focusing on what matters most, wherever you are.
- At Prysmian we want to lead the energy transition and digital transformation and we are evolving our brand to reflect this ambition.
- Through our knowledge, innovation and reach, we connect people and businesses with the energy and information they need.
- We drive new energy and intelligence everywhere. Together, we can lead the shift to a more sustainable way of living, that we and our planet so clearly need.

Together, we can navigate the way forward.

Introducing fibre optic systems for OHTL

Overhead optical fibre cable systems have become a key factor in telecommunications networks used by operators and power utilities.

Due to the fact that no civil works are required and the rights of way have already been established, it is possible to minimise costs and, most importantly, the time required to begin network operation.

Prysmian offers its customers a complete range of overhead optical systems:

OPTICAL GROUND WIRE SYSTEM (OPGW)

Composite optical ground wire system for installation on high voltage electric lines.

SELF-SUPPORTING CABLE SYSTEM (ADSS)

Self-supporting optical cable system for all types of lines: transport electrical lines, distribution electrical lines, railways lines, etc.

OPTICAL PHASE CONDUCTOR SYSTEM (OPPC)

Composite optical phase cable system, for high voltage electric lines up to 36kV.

ALL-DIELECTRIC LONGITUDINALLY ATTACHED CABLE SYSTEM (ADLA)

Robotised system to install fibre optic cables on ground wire or phase conductor of electrical lines.

Linking communications to communities

Cable solutions to support the world's telecoms infrastructure

As the world's largest producer of telecoms cables, supporting the infrastructures of many of the world's leading telecoms operators, Prysmian delivers optical fibre and copper cabling solutions that help link communications to communities around the globe.

Covering voice, video and data transmission, our suite of telecoms solutions is the outcome of continuous multi-million Euro investment in R&D and production in more than 30 facilities worldwide.





PRYSMIAN'S FIBRE OPTIC SYSTEMS FOR OHTL

Always the right decision

Because OHTL networks are critical assets in any country, the best-performing and safest materials must always be used in their creation.

Customers who choose Prysmian systems are choosing solutions that are proven to succeed in terms of installation and operation. In economic terms, that means no unexpected costs due to on-site delays, professional project management throughout the supply process and true longevity of the technology installed.

AND THE INNOVATION DOESN'T STOP THERE

The main advantages of Prysmian's solutions include the following:

HIGH RELIABILITY AND PROVEN EXPERIENCE

We have installed over 195,000 km of highly reliable cable, with OPGW systems in operation since 1983 in more than 100 countries in all five continents.

SUPPLY OF ALL COMPONENTS, GUARANTEED SYSTEM

Prysmian guarantees the compatibility of its systems, while supplying all materials from end to end:

- 100% Prysmian fibre
- Aerial cables and terminal cables
- Joint boxes, optical distribution frame and connection accessories
- Components for securing the cable to the towers/poles
- Engineering and installation services, with turn-key projects
- Robots and tools for installation
- Customised drum lengths

FULL RANGE OF TECHNOLOGIES

Because we own all of the required technology, we provide every customer with the most appropriate and relevant technical solution for any single project. Prysmian never has a pre-determined answer to a challenge – instead, we always recommend the best solution on a case-by-case basis.

MANUFACTURING CAPABILITIES

Prysmian has a growing production capacity of more than 25,000 km of OPGW cables per year in three different continents; Europe, America and Asia.

OHSAS 18001 AND ISO 14001

Prysmian is involved in implementing management and production processes which help improve environmental sustainability and safety at work, in accordance with the guidelines of its HSE policy.

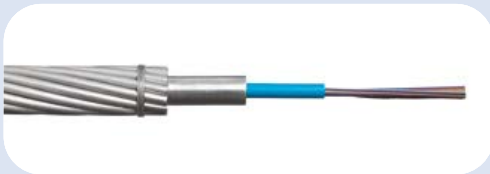
ISO 9001

The Prysmian brand has always been a guarantee for the supply of products and services based on common worldwide quality standards. Prysmian has a built-in multi-step quality assurance programme, which covers the entire production process from cable design and raw materials purchasing, to final inspection and testing documentation.

OHSAS 18001 AND ISO 14001

Prysmian is involved in implementing management and production processes which help improve environmental sustainability and safety at work, in accordance with the guidelines of its HSE policy.

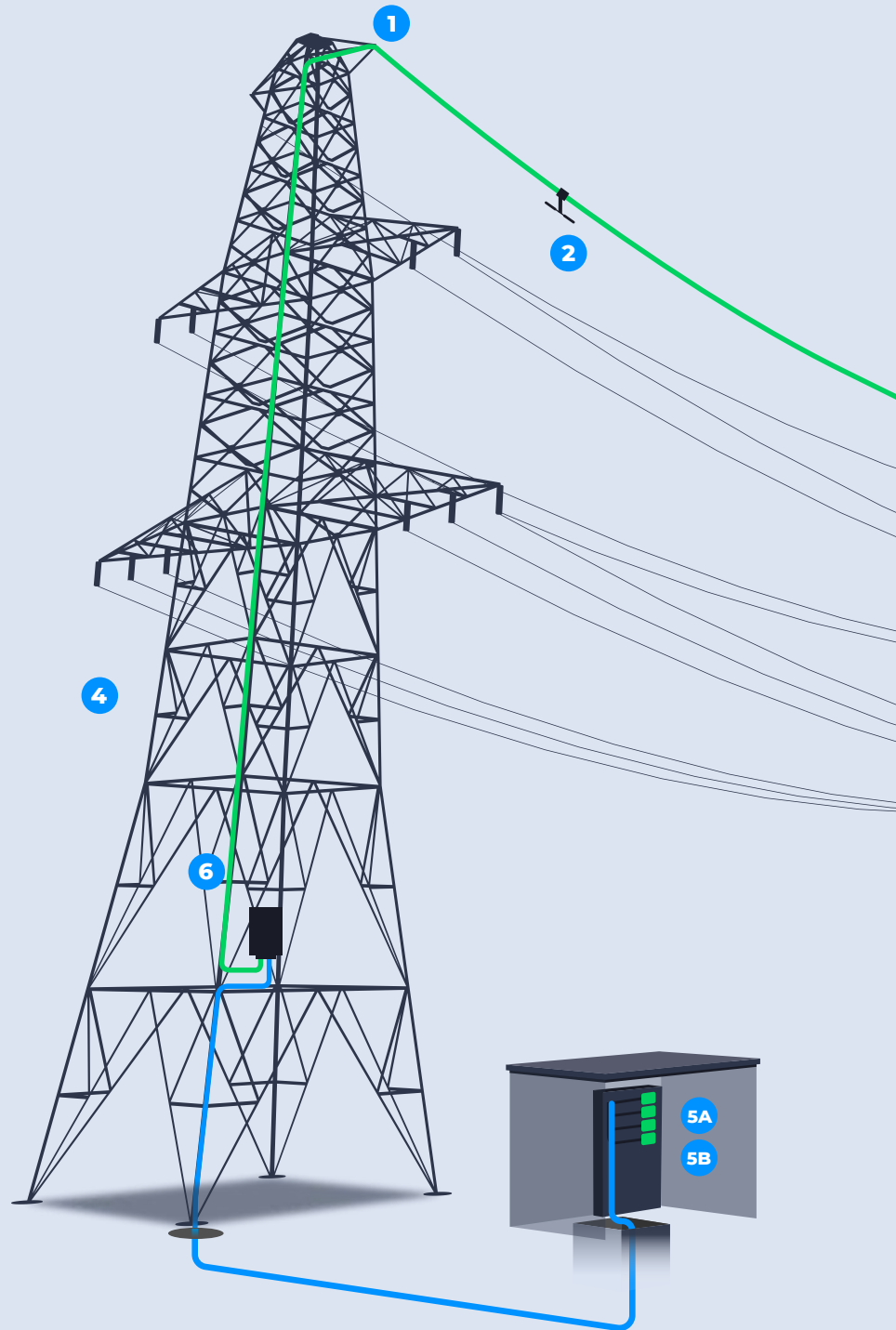
INTEGRATING TELECOMS NETWORKS



OPGW cable



Approach cable





1 Tension assembly



2 Stockbridge damper



3 Suspension assembly



4 Download clamp



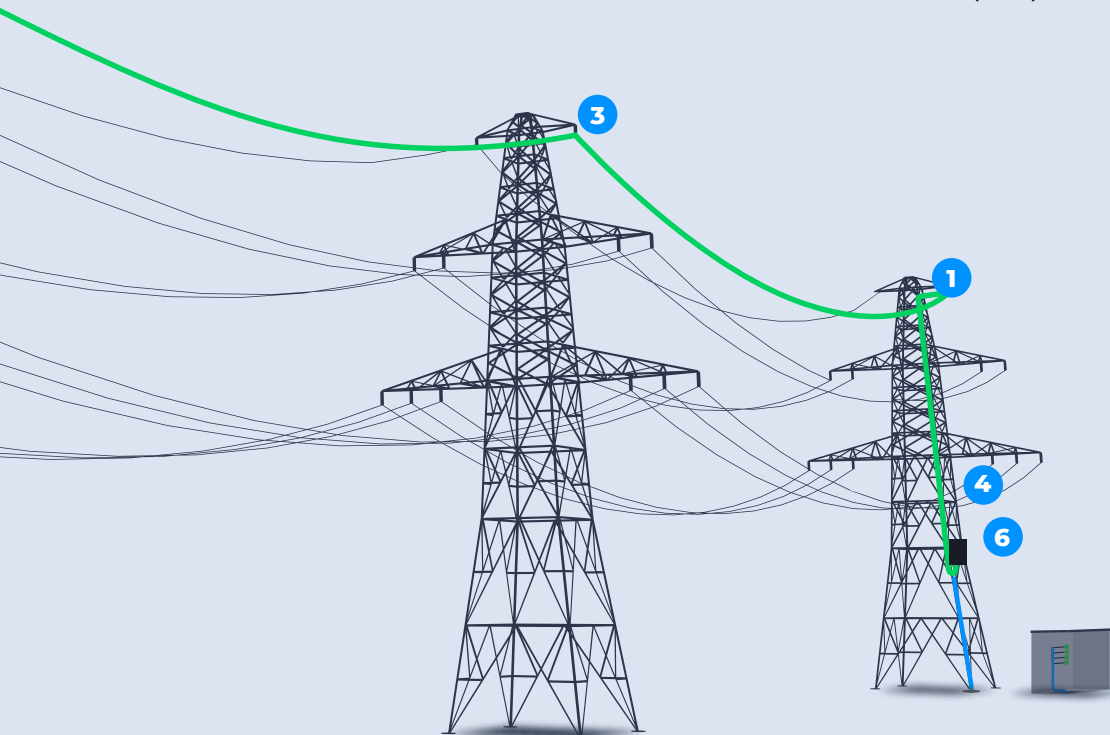
5A Optical module



5B Optical distribution frame (ODF)



6 Joint boxes



Optical fibres



Quality and testing



Engineering and installation

OPGW EXTRUDED ALUMINIUM CABLE

SUPERIOR ELECTRICAL PERFORMANCE

Meets IEEE construction guidelines for use in high corrosion sites

- Aluminium core tube substantially increases conductor cross-section
- Improved short-circuit capacity

SUPERIOR LIGHTNING RESISTANCE

- Fewer Aluminium Alloy (AA) wires are needed to meet electrical specifications
- More/heavier duty ACS wires can be used
- AA wires can be completely replaced with ACS in some applications

SUPERIOR CORROSION RESISTANCE

Meets IEEE construction guidelines for use in high corrosion sites

HIGH PERFORMANCE IN HIGH FIBRE COUNTS

- All fibres are housed in the core tube
- Core tubes are available in a wide range of inside diameters
- Armour wires are not replaced with fibre tubes in high count designs
- Electrical and mechanical properties can be maintained

Prysmian's extruded aluminium OPGW provides increased conductivity without sacrificing tensile performance, lightning resistance or fibre count.

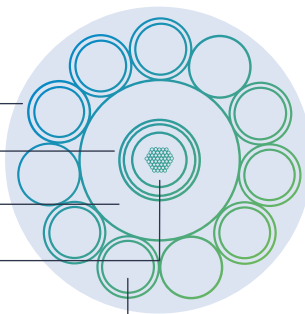
Aluminium clad steel wires

Optical fibres

Aluminium extruded tube

PBT loose buffer tube

Aluminium alloy wires



OPGW STAINLESS STEEL TUBE

Embedded in extruded aluminium technology

SUPERIOR CORROSION RESISTANCE

- Dissimilar metals are prevented from reacting with one another
- Provides performance similar to stainless steel central tube, without the risk of galvanic corrosion
- Meets IEEE construction guidelines for use in high corrosion sites

ENHANCED ELECTRICAL PERFORMANCE

- Aluminium cladding contributes to overall conductivity
- Decreases resistance and increases fault current rating

ENHANCED LIGHTNING RESISTANCE

- Use of aluminium alloy wires can be decreased
- Replacement with ACS wires improves lightning resistance

ALUMINIUM-CLAD STAINLESS STEEL CORE TUBE

- High crush resistance in a small form-factor

COMPACT DESIGN

- Reduced weight
- Increased flexibility
- Smaller minimum bend radius
- Easier to handle and install
- Lower wind and ice loads put less load on structures

Prysmian's aluminium-clad stainless steel OPGW provides a compact design without sacrificing corrosion resistance.

It is best suited to applications with moderate to low span and electrical requirements.

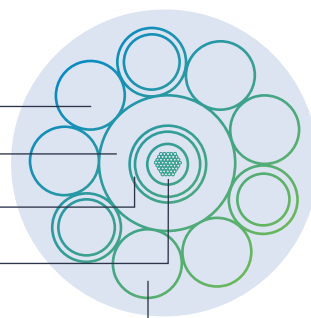
Aluminium alloy wires

Aluminium extruded tube

Stainless steel tube

Optical fibres

Aluminium clad steel wires



OPGW STRANDED STAINLESS STEEL TUBE

STRANDED STAINLESS STEEL TUBE

- Wire strands are replaced with fibre-filled stainless steel tubes
- Fibre tubes are helically stranded alongside the wires
- Fibre strain margin is increased relative to core tube designs
- Loaded sag can be increased without placing fibres under strain

COMPACT DESIGN

- Reduced weight
- Increased flexibility
- Smaller minimum bend radius
- Easier to handle and install
- Reduced weight

Prysmian's stainless steel OPGW cable with the SST in the lateral position allows cable elongation and sag to be increased without increasing fibre strain.

It is best suited to applications where the ground wire will be replaced by an identical cable due to tower limitations. Because of this, OPGW contains exposed elements made of both stainless steel and aluminium.

It should therefore not be used for high corrosion sites.

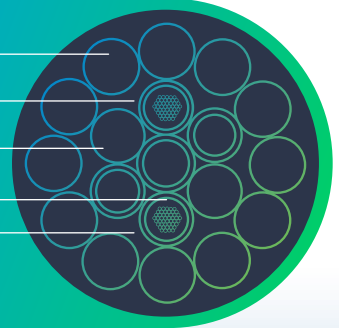
Aluminium alloy wires

Stainless steel tube

Aluminium clad steel wires

Optical fibres

Grease of high drop point as additional corrosion protection



OPGW – SPIRAL SPACE® TECHNOLOGY

SUPERIOR CORROSION RESISTANCE

- Dissimilar metals are prevented from reacting with one another
- Provides performance without risk of galvanic corrosion
- Meets IEEE construction guidelines for use in high corrosion sites

HIGH PERFORMANCE IN HIGH FIBRE COUNTS

- All fibres are housed in the core tube
- Excellent heat protection of fibres
- Armour wires are not replaced with fibre tubes in high count designs. Electrical and mechanical properties can be maintained

Prysmian's OPGW cable with Spiral Space® technology consists of a unique Spiral Space unit for optical fibres. The fibres are loosely buffered in a tube containing an oval, spiralling, hollow channel filled with jelly.

The loose tube construction prevents fibre strain at any stage of installation or operation. This ensures a long, stress-free fibre life.

The Spiral Space® construction allows the use of a high fibre count in a single small-diameter tube.

Aluminium alloy wires

Aluminium extruded tube

Spiral Space®

Optical fibres



OPTICAL FIBRES

With over 20 years' experience of manufacturing optical fibres, Prysmian is able to offer an extensive product portfolio designed to achieve the highest levels of quality and performance. This is thanks to our unique position of having access to the major manufacturing processes: MCVD (Modified Chemical Vapor Deposition), OVD (Outside Vapor Deposition), VAD (Vapor Axial Deposition) and PCVD (Plasma-activated Chemical Vapor Deposition). This enables Prysmian to obtain an optimised range of products for different applications.

SINGLE-MODE FIBRE ITU-T G.652.A/B AND IEC 60793-2-50 B 1.1

Single-mode fibre (SMF) provides optimum performance in both the 1,310 nm and 1,550 nm wavelength operation ranges (including the 1,565 – 1,625 nm L-band), with a low dispersion in the 1,310 nm window. It can be used in all cable constructions and supports long haul, metropolitan, access and premises applications in telecommunications, CATV, utility and intelligent traffic networks.

SINGLE-MODE FIBRE ITU-T G.652.C/D AND IEC 60793-2-50 B 1.3

Enhanced single-mode fibre (ESMF) provides improved performance across the entire 1260 nm to 1,625 nm wavelength spectrum. It has a low dispersion in the 1,310 nm window and low attenuation in the 1,383 nm water-peak region to allow use of the extended band (1,360 nm to 1,460 nm). With its wide operating spectrum, ESMF expands the future growth capability of the fibre and allows flexible configuration of voice, data, and video services within the fibre. It can be used in all cable constructions.

SINGLE-MODE FIBRE ITU-T G.652.C/D AND IEC 60793-2-50 B 1.3, WITH LOWER CABLED LOSS

Enhanced single-mode fibre (ESMF) with lower secured cabled loss in all the transmission bands, including the highest ones (L and U-bands), intrinsically more sensitive, provides further improved and secured performance across the entire spectrum; such premium attenuation levels inside the finished cable, even in demanding environments, are offered through superior microbending resilience of the fibres used while still preserving all parameters and characteristics of G.652.C/D fibres, made possible using a fine-tuned glass optimisation combined with the use of a highly performing protective coating.

SINGLE-MODE ITU-T G.655.C/D AND IEC 60793-2-50 B 4_C/D

Non-Zero Dispersion Shifted Fibres (NZDSF) designed for DWDM applications. They are characterised by relatively lower dispersion values from 1,530 to 1,625 nm, compared to G.652 fibres. They are available in two grades, to cover a variety of transmission challenge optimisations: one version with large effective area (NZDSF-LA) to contain the generation of non-linear effects during propagation, and another version with reduced chromatic dispersion slope (NZDSF-RS) to equip a broader range of channels with the benefits of a lower dispersion.

SINGLE-MODE ITU-T G.656 & G.655.C/E AND IEC 60793-2-50 B 4_C/E & B5

NZDSF with Medium Dispersion values, as described by recommendation ITU-T G.656 and more recently G.655.E, have set the standard for high bit-rate, multi-wavelength transmission. Those fibres are designed with a global transmission optimisation in mind, aiming at containing the detrimental effects of chromatic dispersion whilst at the same time ensuring that the properties of such dispersion still contain the nonlinearities. They offer a unique tradeoff between effective area, chromatic dispersion and dispersion slope thus providing an excellent transmission distortion management, cost-effectively; they secure operation at 10, 40 and 100 Gbps per channel, tight channel spacing in C- and L-bands, and compatibility with the S-band; a definite step further for long-haul and ultra-long-haul applications.

Prysmian's fibre manufacturing process quality and performance coupled with Proprietary ColorLockXS™ coating process further enhance the performance, durability and reliability of the fibre, even in the harshest environments.

JOINT BOXES

STAINLESS STEEL BOX

The XOK universal joint closures are designed to provide water and pressure-tight environmental protection for optical fibres and optical fibre splices regardless of the cable design. Application ranges from aerial, duct to buried installations. The closure has anchoring points for strength members and facilities for earthing of metallic elements.

The splice organiser trays offer holders for heat shrink splice protectors and sufficient space for storage of spare fibres. The closure is easily assembled and re-entered.

The closure is available in two sizes: XOK 103 series up to 192 splices and XOK 107 series up to 336 splices. By using extension collars and/or splice trays for fibre ribbons, the splicing capacity can be increased up to 1,000 splices.

The closure is available in seven basic configurations with two, three or four cable entrances. XOK A3/A4 branch joint closures and extension collars for more cable outlets are also available. Closures can be delivered as complete installation packages up to 192 fibres.

DIMENSIONS (EXCL. INLET TUBES)

XOK 103 series: 560 × 230 × 100 mm

XOK 107 series: 560 × 230 × 140 mm

XOK A3 and A4: 560 × 230 × 140 mm

INNER DIAMETER OF ENTRY PORTS

XOK 103 series: round port 20 mm, oval port 58 × 28 mm

XOK 107 series: round port 27 mm, oval port 58 × 28 mm

XOK A3 and A4: oval port 58 × 28 mm

MATERIAL

Closure: acid proof stainless steel (AISI 316) 1.5 mm

Closure seal: chloroprene rubber

STAINLESS STEEL BOX

XOK 103 series: 4 trays XOKP 1024/48 with 48 splices each (192 splices)

XOK 107 series: 7 trays XOKP 1024/48 with 48 splices each (336 splices)

XOK A3 and A4: 4 trays XOKP 1024/48 with 48 splices each (192 splices)

STAINLESS STEEL BOX: IP68

ALUMINIUM JOINT BOX

EWMJ & EWJ joint boxes are specially designed to provide maximum versatility for OPGW cable splicing, which enables their use in OPGW and other optical cable systems. The joint box is made of aluminium alloy and has a maximum capacity of 240 fibre splices. A pre-moulded neoprene anti-ageing gasket, perfectly inserted in the groove of the cover, provides an excellent sealing against dust and water-jets.

An assembling plate prepared with fixing devices for the cable and for the splice trays is placed inside the box.

Cable glands and a heavy wall heat shrinkable tube are used for sealing the entries of the OPGW cables. The anchoring of the joint box to the tower is achieved with galvanized steel clamps allowing the fixation in all type of towers, and with stainless steel tape in all type of poles.

Maximum number of cable entries: 4

Maximum cable diameter (mm): 25

Maximum number of splice trays: 8 (EWMJ) – 10 (EWJ)

Maximum number of splices per tray: 24

Maximum number of splices: 192 (EWMJ) – 240 (EWJ)

IP rating: IP67

Required space envelope (mm): (l) 319 × (w) 219 × (d) 110. (EWMJ) – (l) 319 × (w) 319 × (d) 175 (EWJ)

Operating temperature: -40 °C to + 85 °C

MATERIAL

Joint box: aluminium alloy with grey coated powder (RAL 7042)

Fastening structure: aluminium and galvanized steel

Nuts and bolts: stainless steel



Stainless steel box



Aluminium joint boxes

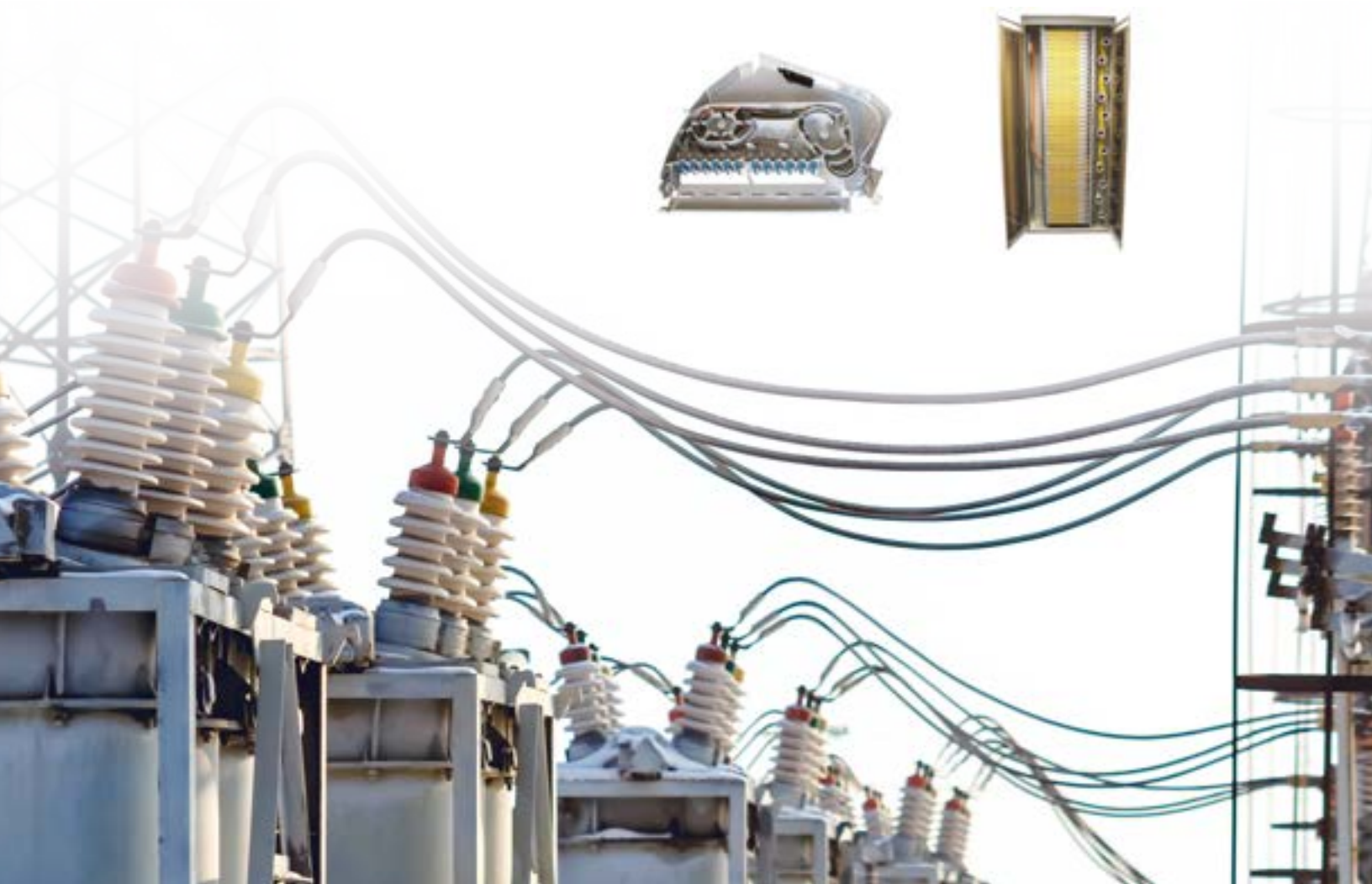
OPTICAL DISTRIBUTION FRAME (ODF)

The RS3000 Rack is a standard rack with 19" mounting rails, used to accommodate a range of SRS3000 shelves and sub-racks or any other 19" rack mounted products.

The rack is 900 mm wide by 300 mm in depth and is available in 42U and 47U heights (2,000 and 2,200 mm). The rack is supplied with side panels and transparent doors. Cable brackets are supplied in the left-hand side of the rack to enable a range of cable anchor brackets to be installed.

Mandrels are supplied in the right hand side of the rack to manage and store patchcords. The maximum capacity of the rack is 2,160 fibres (based on the 47U rack on a splice + patch basis).

The SRS3000 Splice and Patch Shelf is a modular unit available in a variety of configurations for integration into 19" and ETSI racks, street side or wall-mounted cabinets. The product consists of a metal chassis, a plastic lightweight splice and patch module and a cable anchoring system. The product has a capacity of up to 48 fibres in a 1U unit for SC and LC type connectors, and up to 24 fibres for FC, ST and E2000 type connectors. The panel has in-built fibre management to ensure the product is installed correctly and the same every time by installers.



OPGW FITTINGS

Download clamp

The download clamps are used to fix the cable to the tower in the download to the joint box.



STRUCTURE

- Clamp (aluminium)
- M12 rod (galvanized steel)
- Support body (galvanized steel)
- Lock screw (stainless steel)

CONFIGURATION

There are different types of clamps

- Individual clamp, for a single cable
- Standard clamp for two cables, adaptable to all diameters

Suspension assembly

Assembly with reinforced suspension clamp and neoprene inner covering, especially designed for OPGW cables. Includes grounding clamps for tower connection.



STRUCTURE

- Straight shackle (galvanized forged steel)
- Twisted link (galvanized forged steel)
- Parallel connection clamp (aluminium)
- Armour grid suspension clamp (aluminium)
- Preformed rods (aluminium alloy)
- Grounding clamp (aluminium)

CONFIGURATION

According to the environmental conditions, length of span and types of cables it may be necessary to use extra protection rods (reinforced suspension assembly).

The assembly components can be provided with optimum features in accordance with client requirements.

Stockbridge damper

The dampers are used to absorb the cable vibrations. The number of dampers is determined by the environmental conditions, the distance between towers, the type of OPGW cable and the installation parameters. On request, Prysmian can calculate a customised vibration study.



STRUCTURE

- Securing clamp (aluminium alloy)
- Messenger cable (galvanized steel wire)
- Counterweights (galvanized forged steel)

Tension assembly

Preformed tension assembly especially designed for OPGW cables. Includes grounding clamps for tower connection. When the distance between two anchor towers is greater than the maximum length of OPGW cable drums, there are special tension assemblies for installation in suspension towers, allowing a cable joint to be included.



STRUCTURE

- Straight shackle (galvanized forged steel)
- Extension link (galvanized laminated steel)
- Dead end (compression aluminium clad steel)
- Thimble (cast galvanized steel)
- Protection splice (compression aluminium clad steel)
- Grounding clamp (aluminium)

CONFIGURATION

There are three types of assemblies for installation in tension towers

- Passing tension assembly: for intermediate towers
- Splicing tension assembly: for towers with joint boxes
- Final tension assembly: for final towers
- Tension assemblies for suspension towers: splicing tension assembly, for towers with joint boxes

QUALITY AND TESTING

With more than 110 OPGW cable designs successfully type-tested, Prysmian has extensive experience in OPGW qualification.

Additionally, our in-house laboratories certify that all cables are manufactured in compliance with the design specifications. Prysmian's manufacturing plants are fully ISO certified.

PRYSMIAN HAS THE FOLLOWING IN-HOUSE OPGW TESTING FACILITIES:

Optical fibre parameters, such as cut-off wavelength, MFD, spectral attenuation, chromatic dispersion and PMD, can be measured.

The laboratory is also equipped with tensile machines for the characterisation of metallic wires and plastic sheathing.

Prysmian OPGW manufacturing plants are ISO 9001 and 14001 certified and the quality assurance systems are managed accordingly.

Agreements with international laboratories allow us to achieve cable qualification according to IEEE 1138 and/or IEC 60794.

- Tensile machine (20t)
- Sheave
- Crush
- Impact
- CW Lightning test (400 °C)
- Salt fog test chamber
- (-40/85 °C) Climatic chamber

SERVICES

ENGINEERING AND INSTALLATION

To ensure that the OPGW cables will operate successfully in a high-voltage network, all aspects associated with the implementation of the technology must be correctly analysed.

PRYSMIAN OFFERS ITS CUSTOMERS THE FOLLOWING SERVICES:

- Optimised design of cables and accessories
- Project engineering (calculation of spans, drum lengths, etc.)
- Definition of optical fibre type and quantity
- Line survey – the cable drums, type and quantity of accessories, splice points, etc. are determined at this time
- Supervision of installation, to ensure correct cable stringing and splicing
- Jointing of the drums
- Final commissioning of a line
- Maintenance services, providing the material required (instruments, repair units, etc.)

Prysmian has designed these services to adapt to the specific needs of each installation, optimising the resources of our customers.

PRYSMIAN LIVE LINE INSTALLATION SERVICES

When there are severe restrictions to planned outages, OPGW stringing in energised transmission systems becomes necessary. Prysmian has expertise in OPGW installation in live line conditions, offering a full range of services to support the varied requirements of our customers.

TURN-KEY INSTALLATION REFERENCES

Prysmian has installed more than 13,000 km of cable on a turn-key basis, of which more than 5,000 km were installed in live line conditions.



REFERENCES

Prysmian began installation of OPGW systems in 1983. Since then our technology has been used in more than 100 countries with complete customer satisfaction.

Afghanistan	Central African	Ghana	Malaysia	Poland	Tanzania
Albania	Rep.	Greece	Mali	Portugal	Thailand
Algeria	Chile	Guatemala	Mauritania	Qatar	The Ivory Coast
Angola	China	Honduras	Mexico	Romania	Togo
Argentina	Colombia	Hungary	Moldavia	Russia	Trinidad &
Armenia	Costa Rica	Iceland	Morocco	Saudi Arabia	Tobago
Australia	Croatia	India	Mozambique	Senegal	Tunisia
Bahrain	Cyprus	Indonesia	Namibia	Serbia	Turkey
Bangladesh	Czech Republic	Iraq	Nepal	Slovakia	UAE
Belarus	Dominican	Italy	New Guinea	Slovenia	UK
Benin	Republic	Jordan	Nicaragua	South Africa	Ukraine
Bolivia	Ecuador	Kazakhstan	Nigeria	South Korea	Uruguay
Bosnia and H.	Egypt	Kenya	Norway	Spain	USA
Botswana	El Salvador	Kuwait	Oman	Sri Lanka	Venezuela
Brazil	Ethiopia	Latvia	Pakistan	Sudan	Vietnam
Bulgaria	Finland	Lebanon	Panama	Sweden	Yemen
Cambodia	France	Libya	Paraguay	Switzerland	Zambia
Cameroon	Georgia	Lithuania	Peru	Syria	Zimbabwe
Canada	Germany	Macedonia	Philippines	Tajikistan	



Para resolver cualquier duda o inquietud, comunícate con nosotros, ingresando al siguiente link o escaneando el QR.

co.prysmian.com/contactenos



Distribuidor Autorizado:

Calle 20 N° 68 B-71
Bogotá, D.C. - Colombia
PBX: +57 601 404 2666
co.prysmian.com

© Prysmian - Todos los derechos reservados.

La información contenida en el presente catálogo está dirigida a personas con conocimientos técnicos adecuados y deben entenderse como de evaluación; por tal motivo, su uso y los riesgos inherentes quedarán a exclusiva discreción de los mismos. La información se suministra en carácter de referencia, no asumiendo Prysmian ningún tipo de responsabilidad por los resultados obtenidos ni por los eventuales daños resultantes de su empleo.